

>>> *FULL HD RESOLUTION, DUAL STREAM,  
TRUE DAY / NIGHT, ON-BOARD STORAGE, IP CAMERA*

FULL BODY IP CAMERA

*IPC2MT*



Lens not included

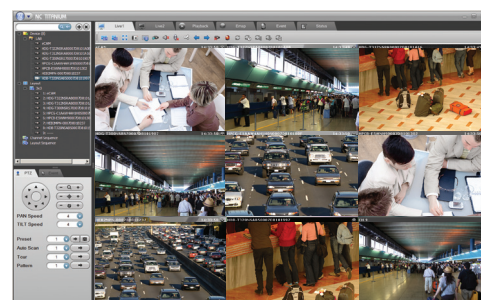
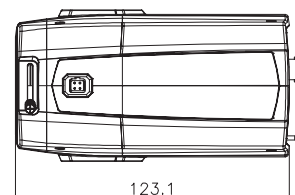
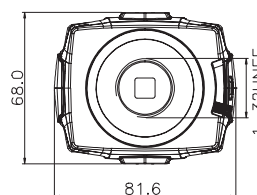
- > Brilliant Video Quality with Full HD, 1920 x 1080 Resolution
- > Highly Efficient H.264 Video Compression which Drastically Reduces Bandwidth and Storage Requirements
- > Progressive Scanning for Sharper Video Motion Images
- > Dual Video Streams Simultaneously at the Full Frame Rate in all Resolutions up to Full HD (1920 x 1080) using Motion JPEG and H.264
- > Supports a Micro-SD Memory Card Slot for Local, Event Detection Recording
- > Minimum Scene Illumination 2.5Lux Color; 0.2Lux B/W; at F1.2, 50IRE
- > TRUE Day/Night Functionality for Low Lighting Conditions
- > Two Way Audio Capability
- > C/CS Lens Mount, Tool-Less Back Focus Ring for Easy Adjustment
- > Backlight Compensation, 2D-DNR (Digital Noise Reduction) and Auto White Balance
- > Motion Detection (8 Windows), Privacy Masking (8 Windows) and FTP Image Upload
- > View and record up to 64 cameras simultaneously with included ATVision IP Remote Management Software
- > Up to 10 Simultaneous Connections through Remote Monitoring
- > Multi-user Authority, Privacy Zone, HTTPS and IP Filtering for Enhanced Data Protection
- > Convenient Network Connection using the UPnP (Universal Plug and Play) Function
- > ONVIF Compliant for Network Video Interoperability
- > Optional Lenses, Housings and Mounts Available
- > PoE & 12VDC/24VAC Power Option Capability



## SPECIFICATIONS

| MODEL   |                              | IPC2MT  |
|---------|------------------------------|---|
| CAMERA  | Image Sensor                 | 1/2.7" Progressive Scan RGB CMOS  |
|         | Active Array                 | 1920(H) x 1080(V)   |
|         | Mount                        | C/CS Mount  |
|         | F-Number                     | F1.2 ~ F3.4   |
|         | Min. Illumination            | Color: 2.5Lux, B/W: 0.2Lux (F1.2, 50IRE)  |
| NETWORK | Shutter Speed                | 1/20,000 ~ 1/30   |
|         | Video Compression            | Motion JPEG, MPEG-4 Part2, H.264 (MPEG-4 Part 10); Profiles: H.264 MP and BP, MPEG-4 ASP and SP                         |
|         | Video Resolutions            | 1920x1080   |
|         | Frame Rate                   | 30fps @ all resolutions   |
|         | Video Streaming              | Simultaneously H.264(or MPEG-4) and MJPEG, Controllable Frame Rate and Bandwidth VBR/CBR H.264 and MPEG-4               |
| GENERAL | Audio Streaming              | 2 Way   |
|         | Protocol                     | TCP/IP, UDP, IPv4/v6, HTTP, HTTPS, QoS, FTP, SNMP, uPnP, RTP, RTSP, RTCP, DHCP, ARP, Zeroconf, Bonjour                  |
|         | Security                     | Multi-user authority, HTTPS, IP Filtering, Privacy Zone   |
|         | Remote Access                | ATVision IP Remote Management Software, Web Browser   |
|         | Max. Connection              | 10  |
| GENERAL | Compatible 3rd Party VMS     | See link on <a href="http://www.atvideo.com">www.atvideo.com</a>  |
|         | Alarm Events                 | File upload via FTP and HTTP, Notification via E-mail, HTTP and TCP, External Output activation, Audio alert activation |
|         | Video Buffering              | Pre and Post Alarm  |
|         | Motion Detection             | Yes, max. 8 programmable windows  |
|         | Network Time Synchronization | Yes   |
| GENERAL | Micro-SD Card Recording      | Yes, Event  |
|         | Software Reset               | Yes   |
|         | Factory Reset                | Yes, Button/Web browser   |
|         | Auto Recovery                | Yes   |
|         | Installation Tool            | Yes, SmartManager (included utility software)   |
| GENERAL | Upgrade                      | Yes, Web browser/SmartManager (included utility software)   |
|         | Alarm Input                  | Terminal, 1 TTL input   |
|         | Alarm Output                 | Terminal, 1 open collector (max. 24V DC, max. 100mA)  |
|         | Micro-SD Card                | Micro-SDHC class 6 or above recommended   |
|         | Ethernet                     | RJ-45 10BASE-T/100BASE-TX   |
| GENERAL | Video Output                 | BNC, 1.0 Vp-p (75ohm, composite)  |
|         | Audio In/Out                 | Terminal, 1 line input / 1 line output  |
|         | Auxiliary                    | Terminal, RS485 Tx+/Tx-   |
|         | Starting Temperature         | 32°F ~ 122°F (0°C ~ 50°C)   |
|         | Operating Temperature        | 14°F ~ 122°F (-10°C ~ 50°C)   |
| GENERAL | Operation Humidity           | 0~90% (non-condensing)  |
|         | Power Consumption            | AC24V/DC12V max.3.0watt, Power over Ethernet IEEE 802.3a Class2/3   |
|         | Dimensions (WxHxD)           | (81.6x68x123.1mm)   |
|         | Unit Weight                  | (335g)  |
|         | Conformity Certifications    | FCC, CE, UL, MIC  |

## DIMENSIONS



ATVision IP Remote Management Software

## ACCESSORIES

## Lenses:

TEK510DC 4.5-10mm Megapixel, Vari-focal  
DC Auto Iris Lens

## Mounts:

CM-TBAR Camera Mount for Drop Ceiling "T-bar"  
CMD16W Camera Wall Mount (White)

## Environmental Housing:

HT1203N Camera Housing w/Heater-Blower

## Housing Mounts:

HMW13 Medium Duty Wall Mount  
A-CM150 Corner Mount Bracket for HMW13  
A-CM151 Pole Mount Bracket for HMW13  
A-CS164A Pipe/Pole Mount Arm for HT1203N

System Requirements for ATVision IP Remote Management Software:

Operating System: Microsoft® Windows® XP Professional, Windows Vista™ Enterprise/Ultimate, Windows 7 Professional/Enterprise/Ultimate (Windows 7 recommended)

CPU: Intel® Core™2 Quad processors or higher (Core™ i7 processor recommended)

RAM: Minimum 1 GB (4 GB or more recommended)