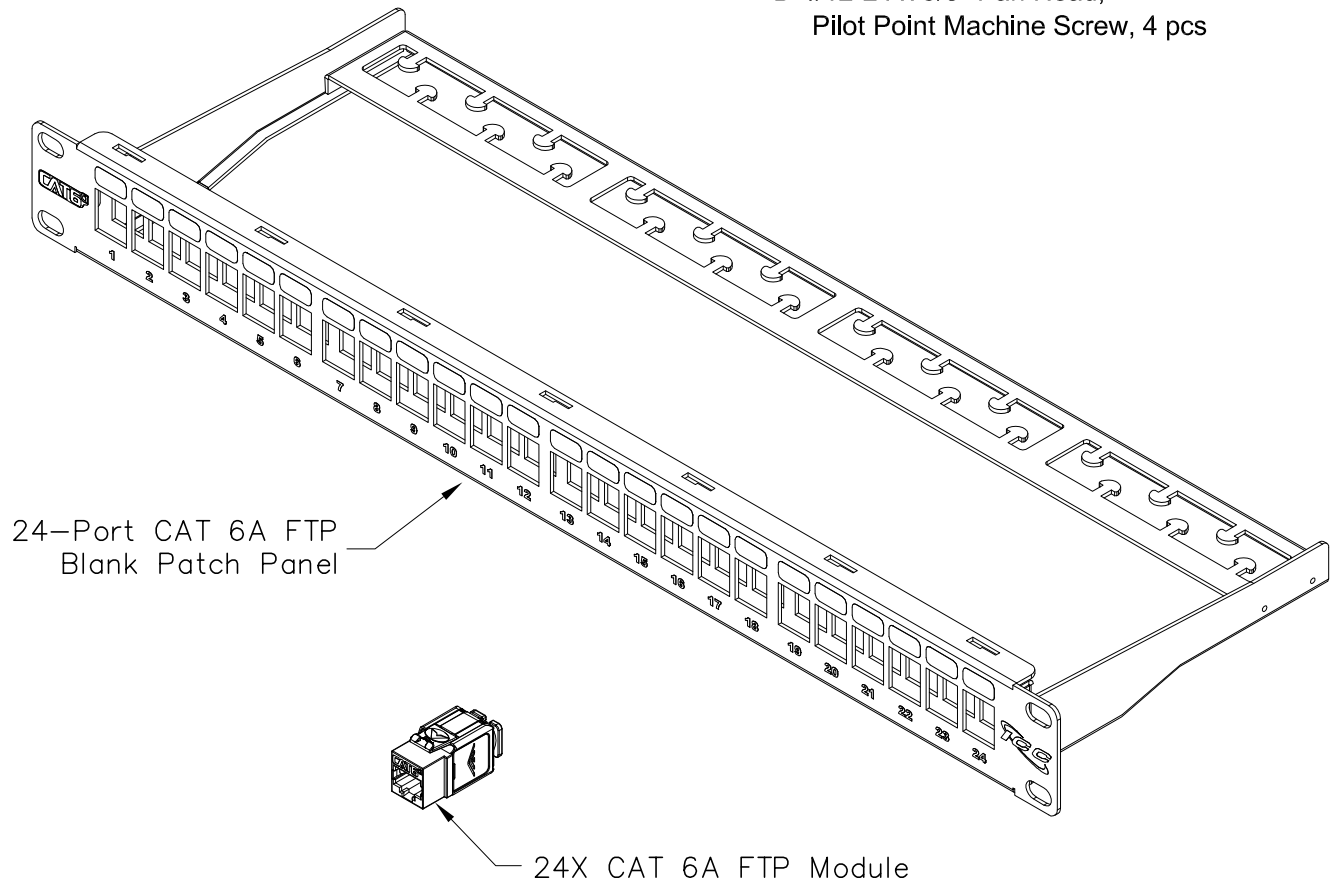


# 24-Port CAT 6A FTP Blank Patch Panel w/24 Unloaded CAT 6A Inserts

## PRODUCT SPECIFICATION

### Package includes:

- A. 24-Port CAT 6A FTP Blank Patch Panel, 1 pc
- B. CAT 6A, FTP, Modular Insert, 24 pcs
- C. Cable Tie, 24 pcs
- D. #12-24 x 5/8" Pan Head,  
Pilot Point Machine Screw, 4 pcs



### Features and Benefits:

- Accommodates ICC CAT6A FTP Modular Connector
- Designed to minimize the alien crosstalk for 10G applications
- Includes rear cable management to facilitate proper bend radius of cable
- Compatible with standard 19" distribution racks
- Pre-installed grounding studs for quick installation

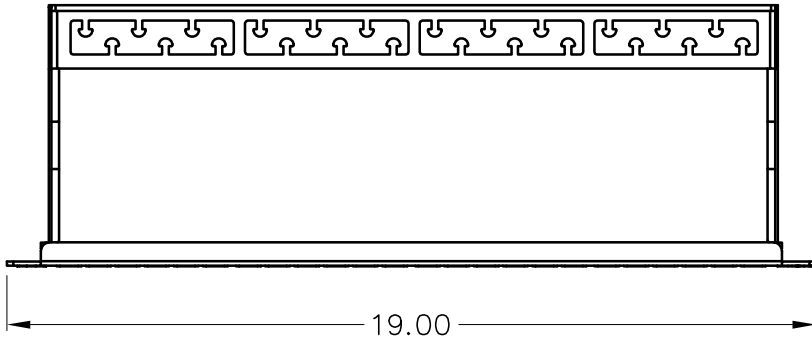
### PATCH PANEL, CAT 6A, SHIELDED, 24-P, 1RMS

ITEM NO.	ICMPP246AS
DWG NO.	PSMPP246AS

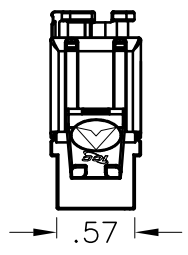
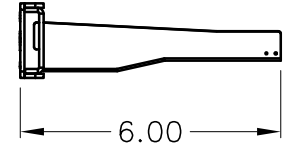
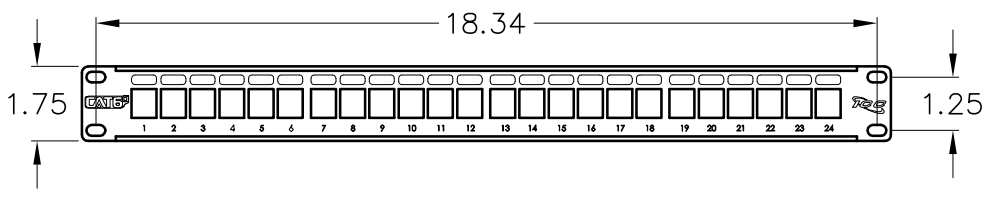
REV.	A
PAGE NO.	1



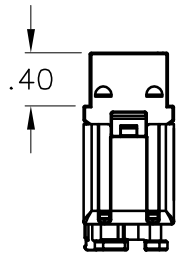
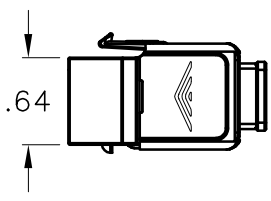
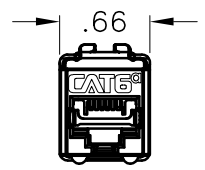
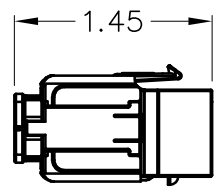
CUSTOMER CARE / TECHNICAL SUPPORT \* CSR@ICC.COM / 888-ASK-4-ICC (275-4422) \* 14700 Alondra Blvd, La Mirada, CA 90638 \* Phone 562-356-3111 \* Fax 562-356-3100 \* www.icc.com



**NOTE: UNLESS OTHERWISE SPECIFIED**  
 1. 24-PORT PATCH PANEL:  
 A. MATERIAL: 16GA CRS  
 B. SURFACE FINISH: FRONT - BLACK POWDER COAT  
 BACK - ZINC PLATED



**NOTE: UNLESS OTHERWISE SPECIFIED**  
 1. CAT6A FTP MODULAR CONNECTOR:  
 A. ENVIRONMENTAL CONDITIONS:  
 -TEMPERATURE RANGE  
 -STORAGE:-40 TO +70°C, OPERATIONAL:-10 TO +60°C  
 -RELATIVE HUMIDITY (OPERATIONAL):  
 MAXIMUM NONCONDENSING 93%  
 B. ELECTRICAL:  
 -INSULATION RESISTANCE: 500 MEGAOHM MIN  
 -CONTACT RESISTANCE: 20 MILLIOHM MAX  
 -DIELECTRIC WITHSTANDING VOLTAGE: 1,000 VOLTS D.C.,  
 60 HZ, 1 MIN  
 C. MECHANICAL:  
 -TOTAL CONTACT FORCE: 800 GRAM FOR  
 8 WIRE LEADS MINIMUM  
 -RETENTION: 50N (11 LBF) FOR 60S±5S  
 -INSERTION LIFE: 750 CYCLES MIN  
 D. PHYSICAL:  
 -HOUSING: ZINC-ALLOY FULLY SHIELDED  
 -SPRING WIRE: PHOSPHOR BRONZE ALLOY  
 PLATED WITH 50 MICRO-INCH OF GOLD OVER  
 70~100 MICRO-INCH OF NICKEL  
 2. WIRE TERMINATION CAP: ABS  
 3. IDC WIRE GAUGE: 22~24 AWG



**PATCH PANEL, CAT 6A, SHIELDED, 24-P, 1 RMS**

ITEM NO.	ICMPP246AS	REV.	A
DWG NO.	PSMPP246AS	PAGE NO.	2



CUSTOMER CARE / TECHNICAL SUPPORT \* CSR@ICC.COM / 888-ASK-4-ICC (275-4422) \* 14700 Alondra Blvd, La Mirada, CA 90638 \* Phone 562-356-3111 \* Fax 562-356-3100 \* www.icc.com