

1 CHANNEL, DUAL STREAM, D1 RESOLUTION, IP VIDEO ENCODER

IP VIDEO ENCODER IPE1CH



- ▶ Converts 1 channel of analog video into network, IP video
- ▶ Exceptional D1, 704 x 576 resolution
- ▶ Highly efficient H.264 video compression which drastically reduces bandwidth and storage requirements
- ▶ Dual video streams simultaneously, up to 30-ips, at D1 resolution using H.264 and MJPEG compression
- ▶ Equipped with RS-485 port for connecting PTZ camera
- ▶ Motion detection (8 zones), Privacy Masking (8 Windows) and FTP Image Upload
- ▶ Includes ATVision IP Remote Management Software
- ▶ Accepted web browsers for viewing video with Windows operating system include Internet Explorer, Safari, Firefox and Google Chrome
- ▶ Supports alarm in/out and two-way audio
- ▶ Multi-user authority, Privacy Zone, HTTPS and IP filtering for enhanced data protection
- ▶ ONVIF compliant for network video interoperability
- ▶ PoE & 12VDC/24VAC Power Options

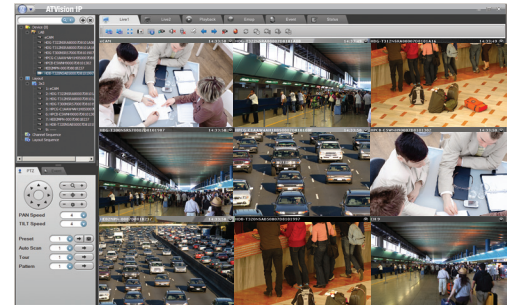
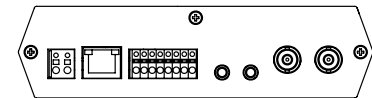
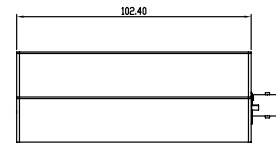
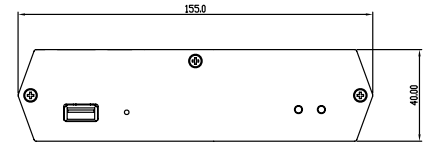
IP VIDEO ENCODER IPE1CH

IP PRODUCT SERIES

SPECIFICATIONS

MODEL	IPE1CH	
V I D E O	Video In/Out	BNC, 1.0Vp-p [75ohm, composite]
	Compression	Motion JPEG, MPEG-4 Part2, H.264 (MPEG-4 Part 10) Profiles: H.264 MP and BP, MPEG-4 ASP and SP
	Resolutions	4CIF, 2CIF, CIF, QCIF, VGA, QVGA, QQVGA Max. 704x480/704x576 [NTSC/PAL], Min. 160x120
	Frame Rate, H.264	Up to 30/25fps [NTSC/PAL] @ all resolutions
	Frame Rate, MPEG-4	Up to 30/25fps [NTSC/PAL] @ all resolutions
	Frame Rate, MJPEG	Up to 30/25fps [NTSC/PAL] @ all resolutions
	Video Streaming	Simultaneously H.264 (or MPEG-4) and MJPEG Controllable Frame Rate and Bandwidth, VBR/CBR H.264 and MPEG-4
A U D I O	Audio In/Out	1/1, RCA
	Audio Streaming	2 Way
	Compression	G.711 ADPCM 40kbps~16kbps
N E T W O R K	Security	Multi-user authority, HTTPS, IP Filtering, Privacy Zone
	Supported Protocol	TCP/IP, UDP, IPv4/v6, HTTP, HTTPS, QoS, FTP, SNMP, uPnP, RTP, RTSP, RTCP, DHCP, ARP, Zeroconf, Bonjour
	Installation Tool	Yes, SmartManager (included utility software)
	Upgrade	Yes, SmartManager (included utility software)
	Remote Access	ATVision IP Remote Management Software, Web Browser
	Max. Connection	10
F E A T U R E	API Programming Interface	API Supported, Open Platform Compatible: ONVIF
	Alarm Triggers	Motion Detection, External Input, Video Loss
	Alarm Events	File upload via FTP and HTTP, Notification via E-mail, HTTP and TCP External Output activation, Audio alert activation
	Video Buffering	Pre and Post Alarm
	Motion Detection	Yes, Max 8 window
	Privacy Mask	Yes, Max 8 window
	Network Time Synchronization	Yes
	Software Reset	Yes
	Factory Reset	Yes, Button/Web browser
	Auto Recovery	Yes
	Alarm In/Out	1 TTL / 1 Relay Output
	Auxiliary	1 x RS485
	Ethernet	RJ-45 10BASE-T/100BASE-TX PoE
LED Indicator	Power, Network	
G E N E R A L	Operating Temperature	32° - 122°F (0° - 50°C)
	Operation Humidity	0~90% (non-condensing)
	Power Consumption	AC24/DC12V max. 5watt, Power over Ethernet IEEE 802.3af Class2/3
	Dimensions (WxHxD)	6.1 x 1.57 x 4.03in (155 x 40 x 102.4mm)
	Unit Weight	1.0lb (.455kg)
Conformity Certifications	FCC, CE, MIC	

DIMENSIONS



ATVision IP Remote Management Software

System Requirements for ATVision IP Remote Management Software:

Operating System: Microsoft® Windows® XP Professional, Windows Vista™ Enterprise/Ultimate, Windows 7 Professional/Enterprise/Ultimate (Windows 7 recommended)

CPU: Intel® Core™2 Quad processors or higher (Core™ i7 processor recommended)

RAM: Minimum 1 GB (4 GB or more recommended)