



>>> SUPER HIGH RESOLUTION, TRUE DAY/NIGHT, DIGITAL WDR VANDAL DOME

VANDAL DOME CAMERA **VD600TDNW**

- > Superior Image Quality (600TVL) Resolution with Excellent Color Reproduction
- > 1/3" Sony Super-HAD CCD
- > Digital Wide Dynamic Range (D-WDR) for High Contrast Lighting Conditions
- > TRUE Day/Night Functionality for Low Light Applications
- > 2.8~12mm Vari-focal DC Auto-Iris Lens
- > Super- Sensitive Minimum Scene Illumination of 0.14Lux (Color); 0.03Lux (B/W)
- > Motion Detection (240 cells) / Privacy Masking (6 Points)
- > OSD (On Screen Display) with Tactile Joystick Switch
- > Back Light Compensation (BLC) and Digital Image Stabilization (DIS)
- > 3D-Digital Noise Reduction (DNR) for Increased Video Image Quality
- > Sense-Up 2-256x for Extreme Low-Light Image Capture
- > IP66 Weather Resistant and Vandal Resistance Dome Housing with 3-axis Gimbal
- > Test Monitor Output and Cable Supplied
- > Optional Heater, Wall, Flush and Ceiling Mounts
- > Dual Voltage 12VDC / 24VAC Capability



VANDAL DOME CAMERA

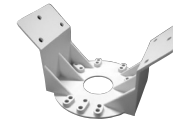
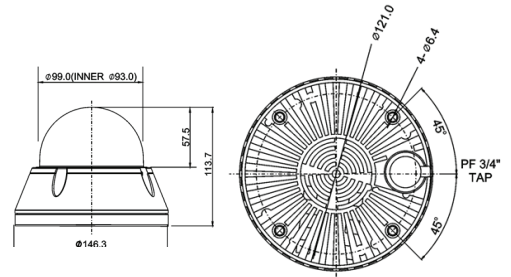
VD600TDNW

PERFORMANCE SERIES

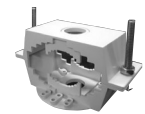
SPECIFICATIONS

| MODEL | | VD600TDNW |
|---------------------------|---|---|
| POWER | Power Source | DC 12V / AC 24V (+/- 10%) |
| | Power Consumption (with optional heater) | Max 4.0 Watts 20W (24VAC) |
| | | |
| GENERAL | Image Sensor | 1/3" Sony Super HAD CCD |
| | Total Pixels | 811(H) x 508(V) |
| | Scanning System | 2:1 Interlace |
| | Scanning Frequency Sync. System | 15.73KHz(H) x 59.94Hz(V) NTSC; Internal / Line Lock |
| VIDEO | Resolution | 600TVL Color; 700TVL B/W |
| | Min. Illumination | 0.14Lux (Color); 0.03Lux (B/W) |
| | Video Output | 1.0Vp-p (75ohm Termination) |
| | S/N Ratio | More than 50db (AGC Off) |
| OPERATION | Camera Control | OSD (Tactile Joystick Switch) |
| | | |
| FUNCTION | 3D-DNR | Off/Low/Middle/High |
| | Dead Pixel Cancellation (DPC) | Off, Auto (White, Black, DPC Level) |
| | Lens | DC / ELC |
| | Back Light Compensation (BLC) | Off/On |
| | Auto Gain Control (AGC) | Off/Low/Middle/High |
| | Sense Up | Off / 2-256x |
| | White Balance (WB) | AWC/ATW/Manual/Push |
| | Day / Night | Auto/Color/B&W/Ext |
| | Video Motion Detection (VMD) | Off / On (Set Window, All Set, All Clear, Sensitivity, Show Indicator, Delay Out) |
| | Privacy Zone | Off / On (6 Point, Polygonal Mosaic) |
| | Display Title | Off / On (Edit, Reset, Position) |
| | Video Picture | Positive / Negative |
| | Side Light Compensation (SLC) | Off/On (0-50) |
| | Sharpness | 0-49 |
| | Digital Image Stabilization (DIS) | Off/On |
| | Mirror | Normal / Mirror / V-Flip / Rotate |
| | Digital-WDR | Off/On (0-20) |
| | D-Zoom & Pan/Tilt Zoom | (1-3x), Pan (-128 to 127), Tilt (-82 to 81) |
| | Sync | Internal / Auto |
| | Power Input | 2-Pin Wire |
| MECHANICAL | Video Output | BNC Connector |
| | Lens | 2.8~12mm F1.2, Vari-focal DC Auto Iris |
| | Operating Temperature w/ optional heaters | HT202VF: -22°F (-30°C) HT202S5: -58°F (-50°C) |
| | Dimensions (Dia. X H) | 5.78 x 4.44in (146.3mm x 113.7mm) |
| | Weight | 1.54 lb (0.7kg) |
| | Environment | IP66 |
| Conformity Certifications | FCC, CE, RoHS, UL | |

DIMENSIONS



A-CM150



A-CM151



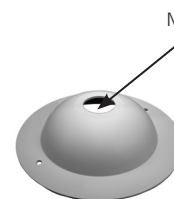
BTCV5



CV-FLUSHMT



DB243W2



PDA5W

Mounting hole sized for 3/4" conduit connector



VDSMR



VDMWC

ACCESSORIES

| | | | |
|------------|--------------------------------|---------|---------------------------------|
| A-CM150 | Corner mount adapter for VDMWC | HT202VF | Heater kit; rated -22°F (-30°C) |
| A-CM151 | Pole mount adapter for VDMWC | HT202S5 | Heater kit; rated -58°F (-50°C) |
| BTCV5 | Tinted Bubble | PDA5W | Indoor Pendant Mount |
| CV-FLUSHMT | Flush Mount | VDMWC | Outdoor Wall / Ceiling Mount |
| DB243W2 | Wall Mount | VDSMR | Surface mount ring |
| FDCAP | Back shell of VDMWC only | | |